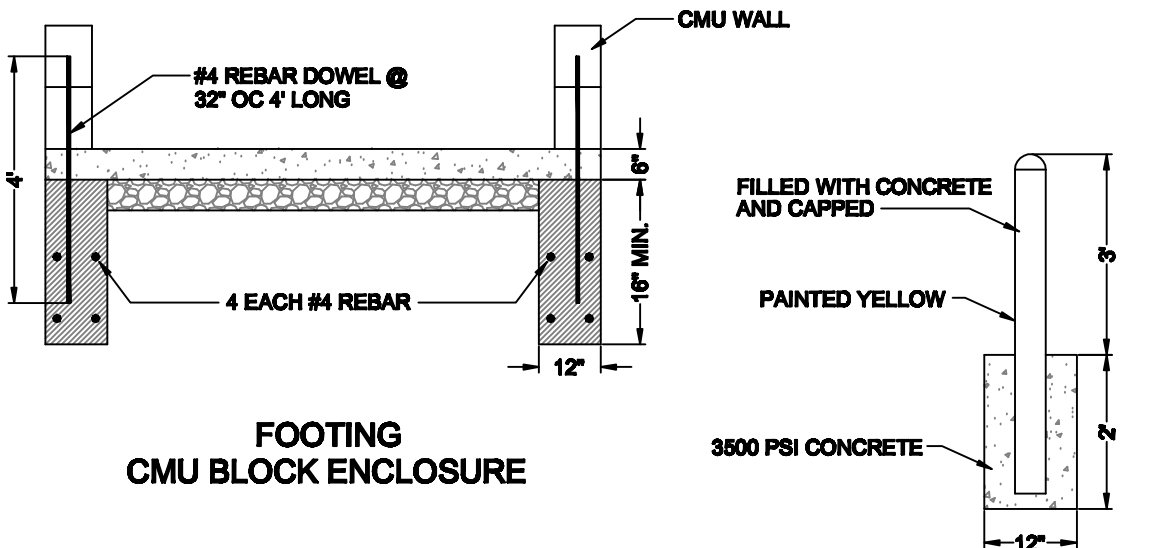
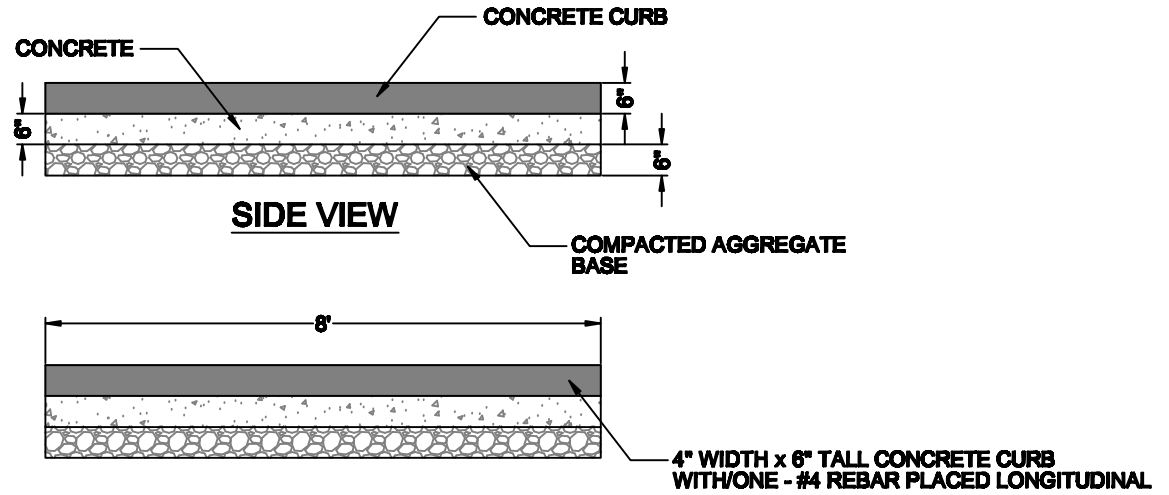


NOTE "A"
 6" THICK CONCRETE SLAB w/6x6-10/10 WWM
 OR #3 REBAR 12" c/c - EACH WAY. SLAB TO BE
 PLACED ON 6" THICK COMPACTED
 AGGREGATE BASE.



NOTES

1. ALL CONCRETE TO HAVE A MINIMUM 28 DAYS COMPRESSIVE STRENGTH OF 3500 PSI.
2. OVERALL LENGTH OF PAD VARIABLE DEPENDING ON SIZE OF SOLID WASTE CONTAINER TO BE USED. SEE TOP VIEW
3. PIPE BOLLARDS REQUIRED TO PROTECT FRONT WALL AND BACK WALL OF ENCLOSURE
4. PROVIDE 6 INCH MINIMUM ASPHALT FOR TRUCK MOVEMENT AREA IN FRONT OF DUMPSTER AND MOVEMENT AREA FROM DRIVE APPROACH AND TURNING AREA.

SOLID WASTE CONTAINER PAD			
CITY OF LAWTON ENGINEERING DIVISION		PROJECT #:	
FILE NAME: Solid Waste Container Pad.dwg		DATE:	
DESIGNED BY: R. Williams	DRAWN BY: S. Malton	PLOT DATE: 1/16/2012	AS BUILT DATE: SHEET OF