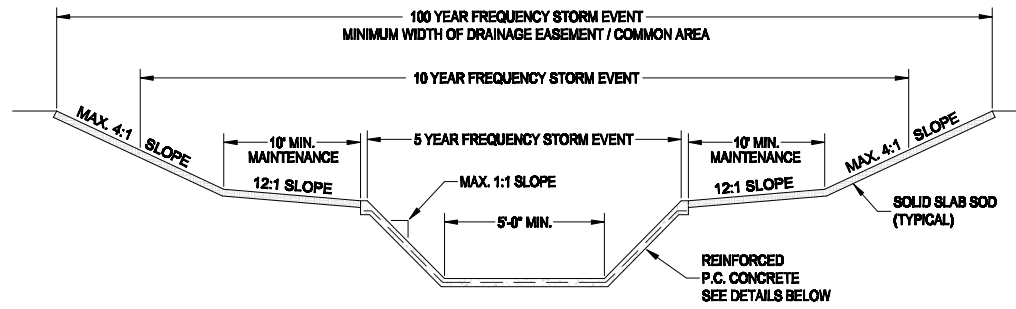
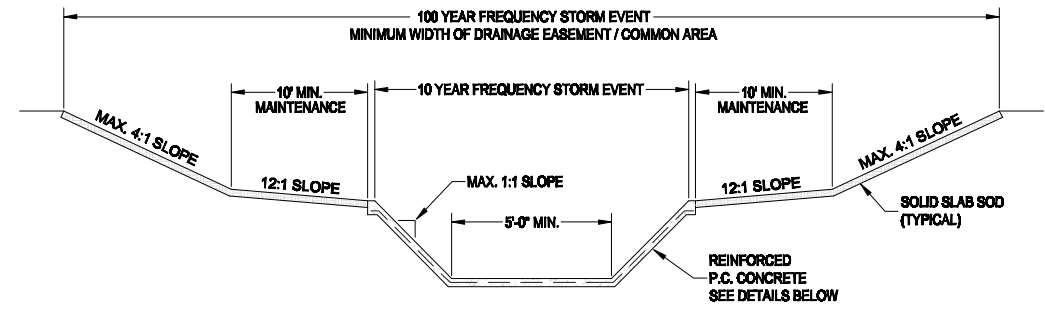


NOTE:
FOR TYPE I CHANNEL DEPTHS OF 3' OR LESS, THE 10' MAINTENANCE AREAS MAY BE ELIMINATED PROVIDED THAT RUNOFF FROM THE 100-YR STORM EVENT IS MAINTAINED WITHIN THE CHANNEL.

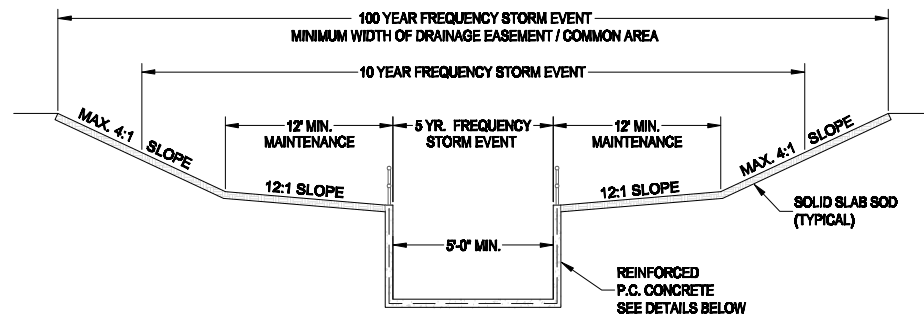
DRAINAGE CHANNEL - TYPE I
TYPICAL SECTION - TRICKLE LINER



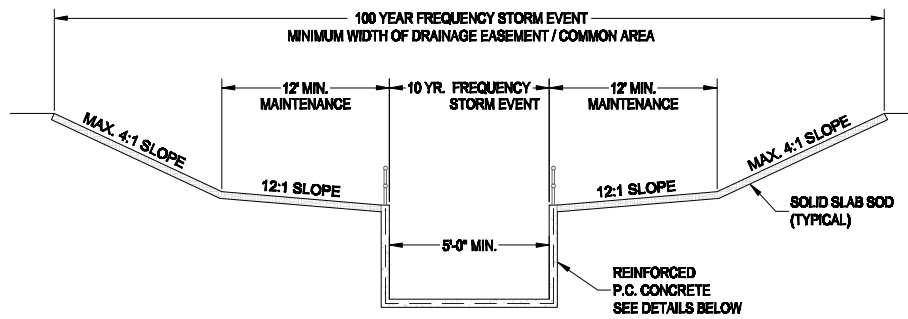
DRAINAGE CHANNEL - TYPE II
TYPICAL SECTION - TRAPEZOIDAL CHANNEL



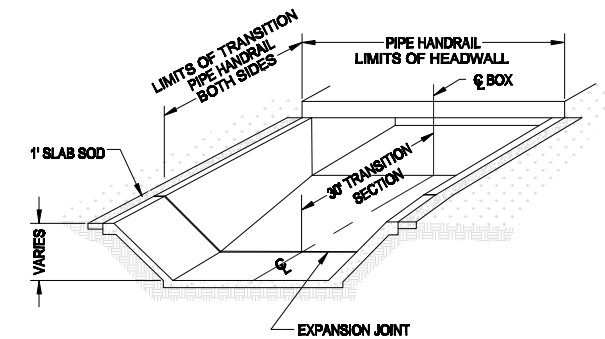
DRAINAGE CHANNEL - TYPE III
TYPICAL SECTION - TRAPEZOIDAL CHANNEL



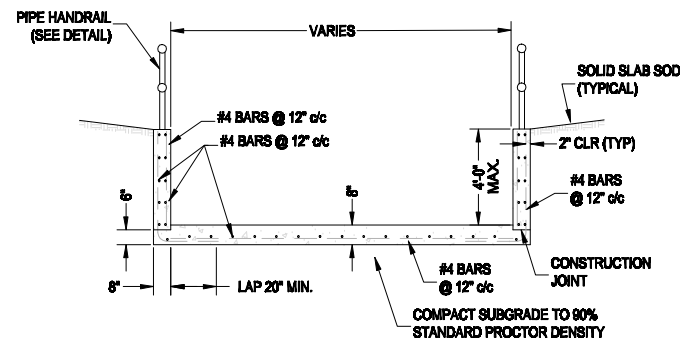
DRAINAGE CHANNEL - TYPE IV
TYPICAL SECTION - RECTANGULAR CHANNEL



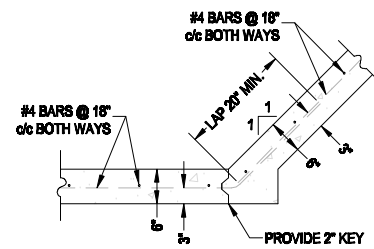
DRAINAGE CHANNEL - TYPE V
TYPICAL SECTION - RECTANGULAR CHANNEL



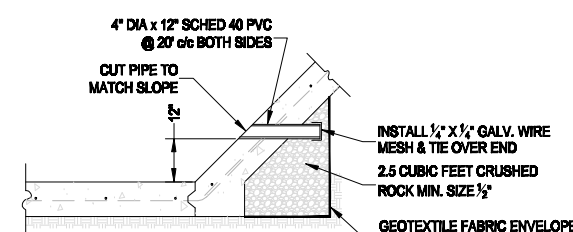
ELEVATION OF CONCRETE CHANNEL LINER
30' TRANSITION TO R.C. BOXES
1:1 SIDESLOPE TO VERTICAL



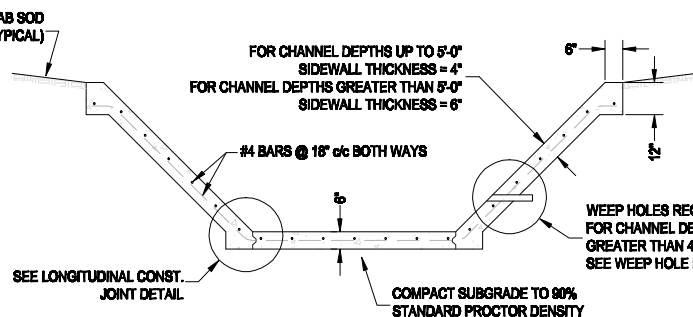
TYPICAL SECTION - RECTANGULAR CHANNEL



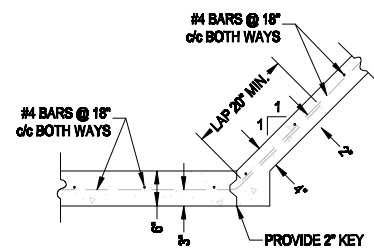
LONGITUDINAL CONSTRUCTION JOINT
FOR DEPTHS GREATER THAN 5'-0"



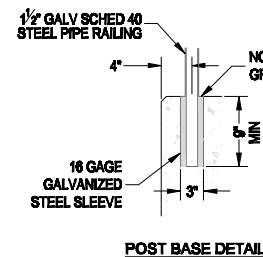
WEEP HOLE DETAIL



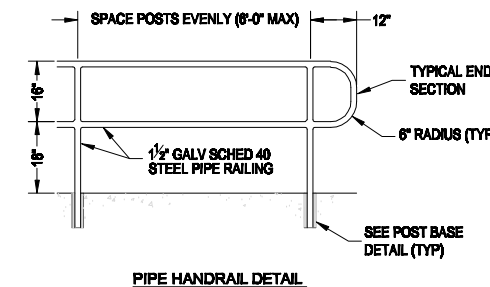
TYPICAL SECTION - TRAPEZOIDAL CHANNEL



LONGITUDINAL CONSTRUCTION JOINT
FOR DEPTHS UP TO 5'-0"



POST BASE DETAIL



PIPE HANDRAIL DETAIL

GENERAL NOTES

1. ALL SADDLED SLOPES SHALL HAVE A RATIO OF 4 HORIZONTAL TO 1 VERTICAL, OR FLATTER.
2. ALL SODDED AREAS SHALL BE GRADED UNIFORMLY TO PERMIT MOWING.
3. ALL CONCRETE CONSTRUCTION SHALL CONFORM TO CITY SPECIFICATIONS.
4. ALL CONCRETE SHALL HAVE A MINIMUM COMPRESSION STRENGTH OF 3000 PSI.
5. CONTROL JOINTS SHALL BE PLACED AT 15' O.C. MAXIMUM.
6. ALL CHANNELS SHALL BE PLACED ON 8" OF CLASS I OR CLASS II MATERIAL COMPACTED TO 95% STANDARD PROCTOR DENSITY.

STANDARD DETAILS
SECONDARY CHANNELS

CITY OF LAWTON
ENGINEERING DIVISION

PROJECT NO.: DATE:
ENGINEER UPDATE DATE: FEBRUARY 2012