

PR2309 ELMER THOMAS PARK AQUATIC CENTER CONTRACT DOCUMENTS CITY OF LAWTON

LAWTON AQUATIC CENT

CONCEPTUAL SCHEDULE

MEMORIAL DAY OPENING

MAY 26, 2025

SOFT OPENING

MAY 2025

*- EQUIPMENT STARTUP
- STAFF TRAINING*

SUBSTANTIAL COMPLETION

MID MAY 2025

ANTICIPATED CONST. DURATION

AUGUST 2024 - MAY 2025 (9 MONTHS)

REVIEW BIDS AND AWARD

JULY 2024 (1 MONTH)

BIDDING

JUNE 2024 (1 MONTH)

BID NUMBERS AND VALUE ENGINEERING EXERCISE

BASE BID	\$14,600,000.00
ALTERNATE LAZY RIVER/SLIDES	\$5,300,000.00
TOTAL BID AMOUNT	\$19,900,000.00

VALUE ENGINEERING

HVAC MODIFICATION TO BATH HOUSE

OPTION 1A NO AIR CONDITIONING IN BATH HOUSE	-\$118,742.00
OPTION 1B MINI SPLIT SYSTEM IN BATHHOUSE	-\$101,570.00

REMOVING PAVING AND SIDEWALK

OPTION 2A CITY DOES ALL PAVING AND SIDEWALKS	-\$644,544.00
OPTION 2B CITY DOES NORTH PAVING AND SIDEWALKS	-\$429,836.00
OPTION 2C GRAVEL BASE IINSTALLED IN NORTH LOT	-\$279,866.00

STRUCTURAL OPTION 3 CHANGE STRUCTURE FOR CONCESSION TO WOOD STUDS	-\$149,280.00
--	----------------------

GEOTECH REVISION OPTION 3 (CAN'T BE REALIZED UNTIL CONSTRUCTION BEGINS)	-\$54,540.00
--	---------------------

**MODIFIED CONTRACT REDUCED BY \$912,566.00 FOR NEW TOTAL OF \$18,987,434.00
DOES NOT INCLUDE ADDITIONAL AE SERVICES TO CHANGE DESIGN FOR OPTION 3**



SITE PLAN

ALL EXISTING ROADS ARE TO REMAIN AS IS

VISIBILITY FROM FERRIS AVENUE AND OUTSIDE THE PARK

UTILIZING EXISTING OPEN AREA NEAR EXISTING SPLASH PAD

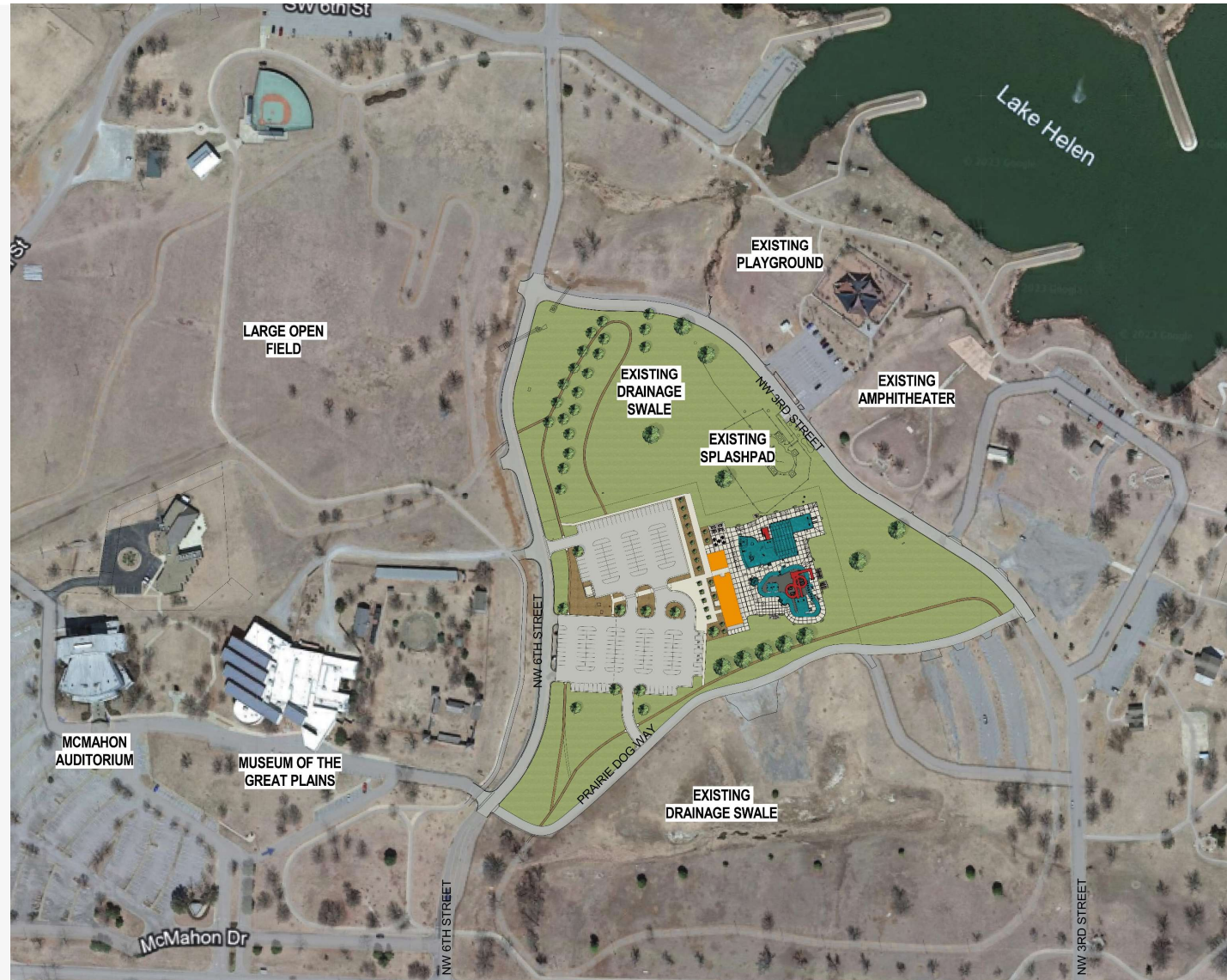
MAINTAINS LARGE OPEN FIELDS NORTH OF THE MUSEUMS AND AUDITORIUM

EXISTING DRAINAGE SWALE COULD BE UTILIZED FOR SITE DETENTION

EXISTING UTILITIES ARE AT OR NEAR THE SITE

FLAT SITE LIMITING EARTHWORK

UTILIZING EXISTING PARKING LOT TO SUPPLEMENT NEW PARKING LOT



SITE PLAN

SITE PLAN

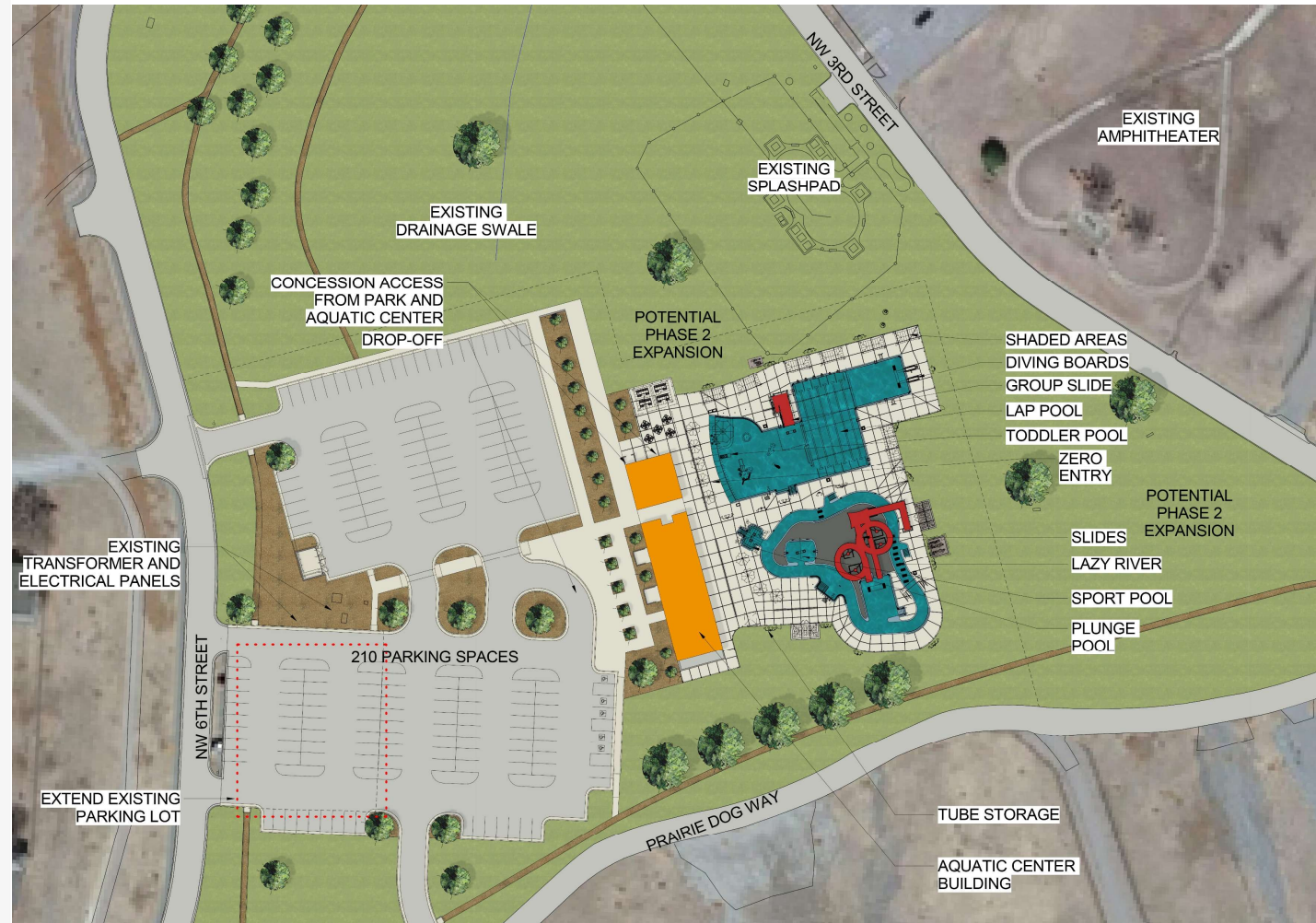
TWO AREAS FOR POTENTIAL FUTURE EXPANSION

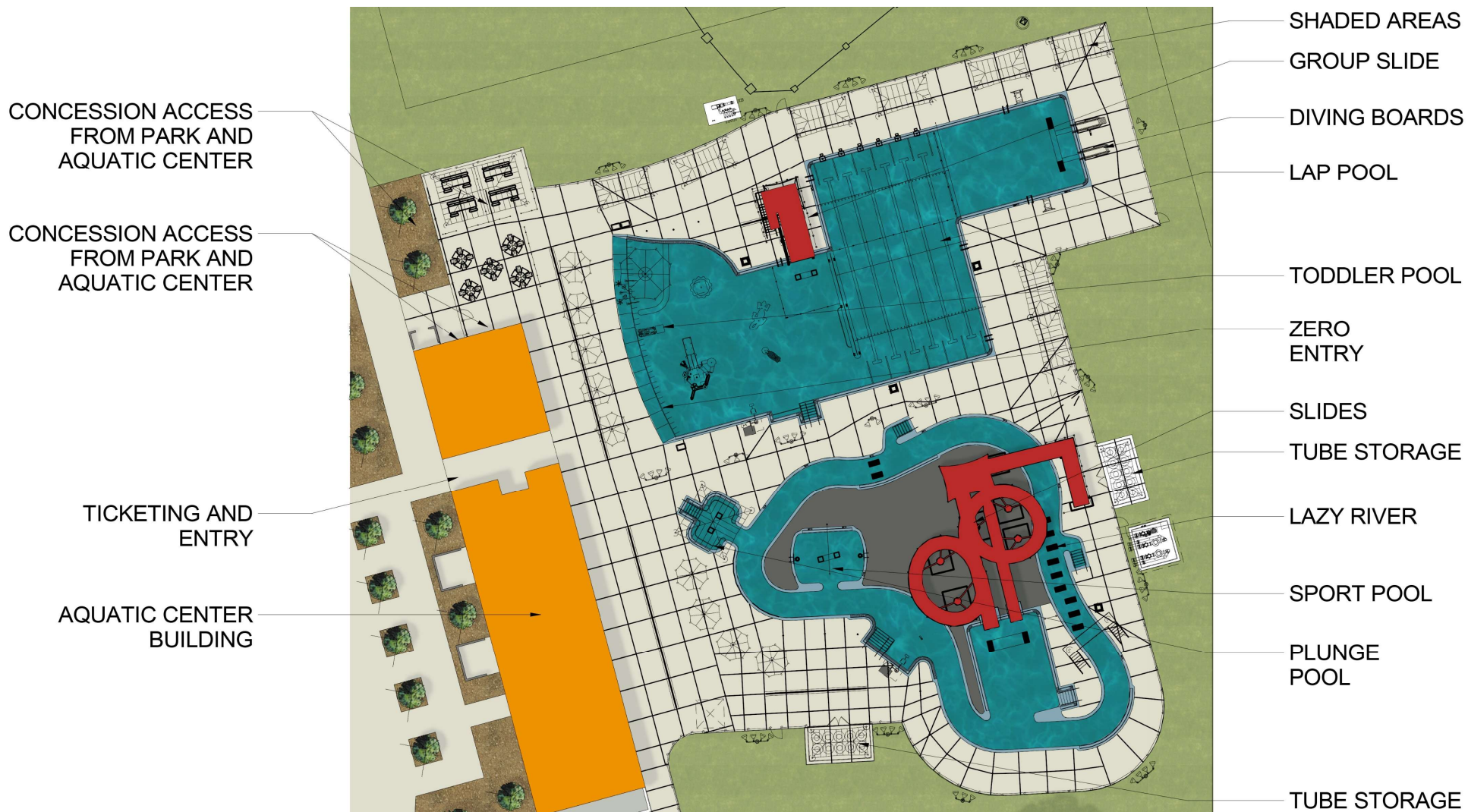
EXPANDING EXISTING PARKING LOT TO SERVE AQUATIC CENTER WITH ADDITIONAL ACCESS OFF PRAIRIE DOG WAY

EXISTING TRANSFORMERS AND ELECTRICAL PANELS ARE INTEGRATED INTO THE LANDSCAPE DESIGN

DROP OFF LOOP AT THE FRONT OF THE BUILDING

CONCESSIONS AND RESTROOMS COULD HAVE ACCESS FROM THE AQUATIC CENTER AND THE PARK





CONCESSION ACCESS
FROM PARK AND
AQUATIC CENTER

CONCESSION ACCESS
FROM PARK AND
AQUATIC CENTER

TICKETING AND
ENTRY

AQUATIC CENTER
BUILDING

SHADED AREAS

GROUP SLIDE

DIVING BOARDS

LAP POOL

TODDLER POOL

ZERO
ENTRY

SLIDES

TUBE STORAGE

LAZY RIVER

SPORT POOL

PLUNGE
POOL

TUBE STORAGE



BUILDING FLOOR PLAN



RENDERING



RENDERING



RENDERING



RENDERING



RENDERING

