

**GENERAL INFORMATION**

**Staff**

Administrator  
Billie Whipp  
Phone 580-581-3472  
FAX 580-581-3473  
Email bwhipp@lawtonok.gov

Auditorium Coordinator  
Andrea Morman  
Phone 580-581-3472  
FAX 580-581-3473  
Email amorman@lawtonok.gov

**Mailing Address**

McMahon Memorial Auditorium  
City of Lawton  
PO Box 522  
Lawton, OK 73502-0522

**Shipping Address**

McMahon Memorial Auditorium  
City of Lawton  
801 NW Ferris Ave.  
Lawton, OK 73507

**Website**

<https://www.lawtonok.gov/departments/mcmahon-memorial-auditorium>

**ADA Accessibility**

The auditorium is wheelchair accessible thru the main entrance as are restrooms on the ground floor. Seating is available in the main level, but there is no access to the balcony. Access to the stage and dressing rooms is via an ADA compliant ramp at the exterior stage door entrance.

**Emergency Information**

Comanche Country Memorial Hospital  
3401 W. Gore Blvd. Phone: 355-8620

**For fire and other emergency situations call 911.**

Southwestern Medical Center  
5602 SW Lee Blvd. Emergency Dept.: 531-4756

**Parking/Travel Directions**

Cars should park near the rear of the building in the main lot.  
Trucks should use the loading dock at the northwest corner of the building.  
The auditorium is located 6 blocks west of the I-44 downtown Lawton exit (2nd Street), between the Museum of the Great Plains and Lawton High School. See our website for further information.

**Crew**

Please see the "Rental Info" tab on the website for current labor rates.

**House Policies**

Smoking is not permitted anywhere in the auditorium or within twenty-five (25) feet of any exit or entrance.  
Weapons of any kind are prohibited.  
Use of the auditorium marquee is not included with rental of the auditorium.  
A short message may be placed on the marquee announcing the event at the sole discretion of the auditorium staff.  
The beverage and food concession is owned and operated by the venue.  
No alcoholic beverages are allowed without prior approval of the venue and City officials and all required licenses and permits.  
No food or drink are allowed in the seating area except bottled water.  
Fastening into the stage floor is not permitted.

## CARPENTRY

**Seating:**

**Total:** 1477

(See Seating Chart Appendix A)

Main Floor: 679 Balcony: 798

### Stage Dimensions

#### Proscenium Opening:

Usable stage width at PL is 41'-0" due to speaker system mounted to the proscenium.

#### Plaster Line (PL) to Upstage Wall:

#### Plaster Line to Downstage Lip of Stage:

#### Plaster Line to Cyc Pipe:

#### Stage Floor to Gridiron:

#### Stage Floor to Orchestra Pit Floor:

#### Orchestra Pit Depth (from House Floor):

#### Lock Rail SR to SL Wall:

#### SR Wing Space (offstg edge of legs to lock rail):

#### SL Wing Space (offstg edge of legs to AC ducts):

(See Groundplan Appendix B & Section Appendix C)

49'-8" wide x 19'-9" high

36'-1"

4'-8"

31'-4"

50'-0"

6'-01/4"

2'-4"

89'-7"

13' clear approx.

13' clear approx.

### Stage Floor

3/4" maple (painted black) over a 3/4" subfloor on 2x4 sleepers laid flat.

Fastening into the floor is not permitted. There are no traps cut.

### Loading Docks

The primary loading dock is located SR just off the parking lot at the north side of the building.

There is an electric dock lift which goes from ground level 3'-1 1/2" to dock level.

The lift has a permanent railing that restricts castered boxes to 5'-6 1/2" maximum width.

The exterior dock door opening is 7'-11" wide x 8'-11" high and transitions via a steel floor plate to the interior loading door which is 7'-11" wide x 9'-6" high and opens directly on to the stage.

There is an ADA-compliant ramp next to the dock lift which accesses the stage door entrance.

A secondary loading dock is located SL and is 3'-6 1/2" above the ground with an exterior door measuring 7'-11" wide x 8'-11" high.

Loads must then access the stage via a storage room and opening measuring 7'-11" wide x 9'-6" high.

### SOFT GOODS

#### Main Valance:

#### Main Legs (on same pipe as Valance):

#### Main Drape:

#### Concert Curtain:

#### Mid-Stage Curtain:

#### Borders:

#### Legs:

#### Upstage Curtain:

#### Cyc:

#### Other Stock Soft Goods

(see Lineset Schedule Appendix D)

Red Velour, Fixed height

Red Velour, on short sections of curtain track

Red Velour, Draw or Fly

White Velour, Draw or Fly

Gold Velour, Fly only

4, Black Velour

5 pair Black Velour

Black Velour, Draw or Fly

White Muslin, straight

4 pair Black Velour Legs, 22'-6" H x 12'-0" W

## **LINESETS/RIGGING**

### **Fly System:**

### **Gridiron Height (Wood; not a full grid):**

Gridiron Access is USR via caged ladders and Loading Gallery

### **Loading Galleries (2):**

### **Battens:**

### **Working Height of Battens:**

### **Lock Rail Location:**

### **Orchestra Shell:**

Note: Main Drape, Electrics, Orchestra Shell, and Travelers cannot be moved.

### **Rigging Equipment:**

## **LIGHTING**

### **Dimming and Control**

### **Company Switch #1 (located USR):**

### **Company Switch #2 (located DSR):**

### **Electrical Distribution**

On-stage Electrics

FOH Catwalk

Other:

All circuits are 20A non-dim

All Edison connectors except one Edison, Stage Pin, and Twistlock per circuit on Balcony Rail and SL & SR US/DS Wing pipes.

### **Console:**

### **Console Location:**

### **Control Protocol:**

### **ETC Response 4-port Net 3 Gateway Locations (Net 3 to DMX)**

### **Houselights:**

### **Houselight Control Locations:**

### **Front of House Positions:**

### **Fixture Inventory:**

(see Lineset Schedule Appendix D)

30-batten Single Purchase Counterweight with Wire Guides  
50'-0"

8'-0" and 15'-6" below Gridiron

1 1/2" Sched. 40, 60' long

5'-1" at Low Trim/ 44'-0" at High Trim

Stage Right at Stage Level

3 linesets: 2 ceiling + 1 rear wall

Genie AWP-30S Personnel Lift; Various Stepladders

Louisville Fiberglass 12' Extension Trestle Ladder

(see Light Plot Appendix E & Circuit Layout Appendix F)

ETC PowerSafe Pro 400A 3Ø 120/208 Wye, Camlocks/Bare Wire

400A 3Ø 120/208 Wye, Bare Wire Lugs, located DSR

3 ETC Sensor IQ 48-circuit Relay Panels, Net 3 controlled

6 ETC ColorSource Raceways, 8 circuits with multiple repeats

and integral 5-pin DMX distribution; one universe with 18 outlets

20-circuits with separate CS DMX raceway as above

Dead-hung US/DS Wing Pipes SL & SR, Balcony Rail,

2 Floor Pockets

ETC Ion XE-20 (4 universes) with 1 standard fader wing 20  
and two touch-screens.

Control Booth at rear of main floor

ETC Net 3/sACN

Electrics 1-6, FOH Catwalk, SL & SR Wing Pipes, Proc. Rack DSR

Altman Chalice 100w LED under DMX control and

Incandescent under-balcony fixtures with architectural dimming

Lighting console or Fleenor PRE10E-A at DSR and Control Booth

FOH Catwalk 30'-6" throw from PL

Balcony Rail 47'-6" throw from PL

Projection Booth (followspots) 99'-0" throw from PL

72 ETC ColorSource PAR

21 ETC ColorSource Ellipsoidal (10@ 26°/8@ 19°/3@ 50°)

10 ETC ColorSource CYC

12 Elation Opti-Tri PAR, LED RGB 54 watt

6 Chauvet Intimidator 360 LED Moving Light

4 ADJ PAR Z100 3K (worklights)

6 Osram Kreios FLx 90W LED Flood (worklights)

12 Altman Phoenix 26° Ellipsoidal, 750w HPL

8 Colortran 213-165 6" 15°-35° Zoom Ellipsoidal, 1kw

2 Lycian 1267 SuperArc 400, Long Throw Followspot

## LIGHTING (continued)

Misc Lighting Equipment

## PROJECTION EQUIPMENT

2 Panasonic PT-DW6300ULS 6000 lumen WXGA Projectors at Balcony Rail

1 Extron MVX44 Matrix Switch, EDID unit, and Kramer VP-413 Scaler

1 Denon DN-V210 DVD player (non-Blu-ray)

2 Da-lite 7'-3" x 11'-7" 16:10 aspect Cosmopolitan Electrol screens at L and R of Proscenium

Note: Video input/control rack can be located at DSR or Control Booth. HDMI & VGA inputs.

## SOUND

### Input/Output Locations:

### House Mix Position:

### House Mixing Console:

Note: Monitors are mixed from FOH console

### Processing:

### Amplification:

### Playback Devices:

### House Mains Speakers:

Proscenium SL and SR for Main Floor

HL and HR for Balcony

Subwoofers (in Orch. Pit)

### Portable Monitor Speakers:

Monitor sends (5 separate):

### Wired Microphones:

Lectern gooseneck

### Wireless Microphones:

Note: 802.11 Wi-Fi Equipment is in use throughout the building.

Receivers:

Handheld Dynamic Cardioid Transmitters:

Belt-pack Transmitters:

Earset Mic:

Lavalier Mic:

### Mic Stands:

Boom Arms:

### Misc:

12 Strand LightPack 1200w portable dimmers

Dazian RGB LED Star Drop, 21' x 60'

Chauvet Amhaze Stadium Hazer

(see Sound Jacks Appendix G)

Control Booth at Center Rear Main Floor, 60'-8" to PL

Soundcraft Si Expression 3 with MiniStageBox 32i

(2) Xilica XD4080

Powersoft Ottocanali/Quattrocanali

Tascam CD200SB CD/SD/USB Player

Apple 2017 iMac with Qlab software

SLS CPC 1212 Passive Bi-Amped Column Array

SLS CPA 7600 Passive Bi-Amped 6-box Line Array

JBL ASB6128 double 18" (2)

SLS 1290 12" Passive Monitor Wedges (6)

Front of stage (A,B,C); USR Floor Pocket ((B,C,D,E)

16 Shure SM58

8 Shure SM57

1 Drumset Mic Kit

1 Peavey PSM 1 Boundary Mic

2 Peavey PSM 2 Boundary Mic

2 Countryman Isomax RF4 18" Cardioid Gooseneck

(All units are Sennheiser A Band UHF 516-558 MHz)

10 Sennheiser EM100-G3

10 Sennheiser SKM100-835-G3

10 Sennheiser SK-100-G3

10 Point Source Audio CO-3

1 Countryman E6

2 Countryman B3

12 K&M 20610.500 Round Base

2 Misc. 6"

2 Misc. 18"

12 K&M 21100.500 Fixed

2 Rapco DB-1 Direct Box

2 Rapco STL-1 Stereo Direct Box

1 Rapco LTlbox Laptop Interface

**STAGE RELAY/PAGING**

**Speaker Locations:**

DSR  
Dressing Rooms  
Green Room  
Ticket Office  
Administrative Offices  
Basement  
Projection Booth (Followspots)  
Control Booth  
DSR at proscenium  
Control Booth

**Paging Mic Locations:**

**COMM SYSTEM**

**Main Station:**

**Beltpacks (single channel):**

**Headsets:**

**Channel A and B Outlet Locations:**

Clearcom CS-702 2-channel A/B (at Control Booth)  
5 Clearcom RS-601/Production Intercom BP-1  
5 Clearcom CC-95 Single Muff  
Proscenium SL (1)  
Proscenium SR (1)  
Lock Rail (2)  
Amplifier Rack (1)  
Orchestra Pit (1)  
Control Booth (4)  
Projection Booth (2)  
Motorola RMU2040 UHF, (4)

**Handheld Two-Way Radios:**

**HEARING ASSIST SYSTEM**

Williams Sound VHF FM Transmitter with 4 receivers

**STAGING EQUIPMENT**

**Wenger Risers**

**4'x8' Fixed-Height:**

4 at 8" High  
4 at 16" High  
4 at 24" High  
7 at 36" High

**Tables (subject to availability):**

25 at 8'  
20 at 6'  
30 at 5' Round

**White Plastic Folding Chairs:**

**Lecterns:**

175  
2 Summit Chameleon, black, fixed height

## **MUSICAL EQUIPMENT**

**Orchestra Chairs:**

**Conductor's Podium:**

**Conductor's Music Stand w/light**

89 Black Padded

4'x4'x9 1/2" Carpeted

Wenger

**Orchestra Shell:**

Ground-supported Side and Back Walls  
with ceiling flown in 3 sections

**Pianos:**

Steinway Model D 9' Concert Grand

Wurlitzer Spinet

## **DRESSING ROOMS**

### **SL Chorus Dressing Rooms**

Men's 17 Make-up Stations/2 sinks w/4 mirrors/2 Urinals/1 HC Stall/1 Shower

Women's 17 Make-up Stations/2 sinks w/4 mirrors/2 Stalls/1 HC Stall/1 Shower

There are nine 6' portable costume racks available.

### **SL 2nd Floor Dressing Rooms**

2 Small Dressing Rooms each with mirror and sink

1 Toilet and Shower

### **SL 2nd Floor Green Room**

22' x 25' with Sofas, Sink and Small Refrigerator

Note: No handicap access to 2nd Floor.

**There is no costume maintenance equipment in the building.**

# Appendix A - Seating Chart

McMahon Memorial Auditorium - Downstairs

679 Seats



Left Orchestra	Left Center Orchestra	Center Orchestra	Right Center Orchestra	Right Orchestra
3 2 1	9 8 7 6 5 4 3 2 1	15 14 13 12 11 10 9 8 7 6 5 4 3 2 1	1 2 3 4 5 6 7 8 9	1 2 3
4 3 2 1	9 8 7 6 5 4 3 2 1	15 14 13 12 11 10 9 8 7 6 5 4 3 2 1	1 2 3 4 5 6 7 8 9	1 2 3 4
4 3 2 1	10 9 8 7 6 5 4 3 2 1	15 14 13 12 11 10 9 8 7 6 5 4 3 2 1	1 2 3 4 5 6 7 8 9 10	1 2 3 4
4 3 2 1	10 9 8 7 6 5 4 3 2 1	15 14 13 12 11 10 9 8 7 6 5 4 3 2 1	1 2 3 4 5 6 7 8 9 10	1 2 3 4
4 3 2 1	11 10 9 8 7 6 5 4 3 2 1	15 14 13 12 11 10 9 8 7 6 5 4 3 2 1	1 2 3 4 5 6 7 8 9 10 11	1 2 3 4
4 3 2 1	11 10 9 8 7 6 5 4 3 2 1	15 14 13 12 11 10 9 8 7 6 5 4 3 2 1	1 2 3 4 5 6 7 8 9 10 11	1 2 3 4
4 3 2 1	12 11 10 9 8 7 6 5 4 3 2 1	15 14 13 12 11 10 9 8 7 6 5 4 3 2 1	1 2 3 4 5 6 7 8 9 10 11 12	1 2 3 4
4 3 2 1	12 11 10 9 8 7 6 5 4 3 2 1	15 14 13 12 11 10 9 8 7 6 5 4 3 2 1	1 2 3 4 5 6 7 8 9 10 11 12	1 2 3 4
4 3 2 1	12 11 10 9 8 7 6 5 4 3 2 1	15 14 13 12 11 10 9 8 7 6 5 4 3 2 1	1 2 3 4 5 6 7 8 9 10 11 12	1 2 3 4
5 4 3 2 1	13 12 11 10 9 8 7 6 5 4 3 2 1	15 14 13 12 11 10 9 8 7 6 5 4 3 2 1	1 2 3 4 5 6 7 8 9 10 11 12 13	1 2 3 4 5
5 4 3 2 1	13 12 11 10 9 8 7 6 5 4 3 2 1	15 14 13 12 11 10 9 8 7 6 5 4 3 2 1	1 2 3 4 5 6 7 8 9 10 11 12 13	1 2 3 4 5
5 4 3 2 1	14 13 12 11 10 9 8 7 6 5 4 3 2 1	15 14 13 12 11 10 9 8 7 6 5 4 3 2 1	1 2 3 4 5 6 7 8 9 10 11 12 13 14	1 2 3 4 5
5 4 3 2 1	14 13 12 11 10 9 8 7 6 5 4 3 2 1	15 14 13 12 11 10 9 8 7 6 5 4 3 2 1	1 2 3 4 5 6 7 8 9 10 11 12 13 14	1 2 3 4 5
5 4 3 2 1	15 14 13 12 11 10 9 8 7 6 5 4 3 2 1	15 14 13 12 11 10 9 8 7 6 5 4 3 2 1	1 2 3 4 5 6 7 8 9 10 11 12 13 14 15	1 2 3 4 5

LO  
53 Seats - 12 Rows

LCC  
188 Seats - 16 Rows

CO  
195 Seats - 13 Rows

RCO  
189 Seats - 16 Rows

RO  
53 Seats - 12 Rows



McMahon Memorial Auditorium - Upstairs

788 Seats



Stage

Left Loge (LL - 33)

7	6	5	4	3	2	1
7	6	5	4	3	2	1
7	6	5	4	3	2	1
6	5	4	3	2	1	
6	5	4	3	2	1	

Left Center Loge (LCL - 65)

11	10	9	8	7	6	5	4	3	2	1				
12	11	10	9	8	7	6	5	4	3	2	1			
13	12	11	10	9	8	7	6	5	4	3	2	1		
14	13	12	11	10	9	8	7	6	5	4	3	2	1	
15	14	13	12	11	10	9	8	7	6	5	4	3	2	1

Center Loge (CL - 75)

15	14	13	12	11	10	9	8	7	6	5	4	3	2	1
15	14	13	12	11	10	9	8	7	6	5	4	3	2	1
15	14	13	12	11	10	9	8	7	6	5	4	3	2	1
15	14	13	12	11	10	9	8	7	6	5	4	3	2	1
15	14	13	12	11	10	9	8	7	6	5	4	3	2	1

Right Center Loge (RCL - 65)

1	2	3	4	5	6	7	8	9	10	11				
1	2	3	4	5	6	7	8	9	10	11	12			
1	2	3	4	5	6	7	8	9	10	11	12	13		
1	2	3	4	5	6	7	8	9	10	11	12	13	14	
1	2	3	4	5	6	7	8	9	10	11	12	13	14	15

Right Loge (RL - 33)

1	2	3	4	5	6	7
1	2	3	4	5	6	7
1	2	3	4	5	6	7
1	2	3	4	5	6	
1	2	3	4	5	6	

Left Balcony (LB - 134)

13	12	11	10	9	8	7	6	5	4	3	2	1
13	12	11	10	9	8	7	6	5	4	3	2	1
13	12	11	10	9	8	7	6	5	4	3	2	1
13	12	11	10	9	8	7	6	5	4	3	2	1
13	12	11	10	9	8	7	6	5	4	3	2	1

Left Center Balcony (LCB - 82)

3	2	1		
4	3	2	1	
4	3	2	1	
4	3	2	1	
5	4	3	2	1

Center Balcony (CB 105)

15	14	13	12	11	10	9	8	7	6	5	4	3	2	1
15	14	13	12	11	10	9	8	7	6	5	4	3	2	1
15	14	13	12	11	10	9	8	7	6	5	4	3	2	1
15	14	13	12	11	10	9	8	7	6	5	4	3	2	1
15	14	13	12	11	10	9	8	7	6	5	4	3	2	1

Right Center Balcony (RCB - 72)

1	2	3		
1	2	3	4	
1	2	3	4	
1	2	3	4	
1	2	3	4	5

Right Balcony (RB - 134)

1	2	3	4	5	6	7	8	9	10	11	12	13
1	2	3	4	5	6	7	8	9	10	11	12	13
1	2	3	4	5	6	7	8	9	10	11	12	13
1	2	3	4	5	6	7	8	9	10	11	12	13
1	2	3	4	5	6	7	8	9	10	11	12	13

Left Balcony (LB - 134)

10	9	8	7	6	5	4	3	2	1			
11	10	9	8	7	6	5	4	3	2	1		
12	11	10	9	8	7	6	5	4	3	2	1	
12	11	10	9	8	7	6	5	4	3	2	1	
13	12	11	10	9	8	7	6	5	4	3	2	1

Left Center Balcony (LCB - 82)

3	2	1		
4	3	2	1	
4	3	2	1	
4	3	2	1	
5	4	3	2	1

Center Balcony (CB 105)

15	14	13	12	11	10	9	8	7	6	5	4	3	2	1
15	14	13	12	11	10	9	8	7	6	5	4	3	2	1
15	14	13	12	11	10	9	8	7	6	5	4	3	2	1
15	14	13	12	11	10	9	8	7	6	5	4	3	2	1
15	14	13	12	11	10	9	8	7	6	5	4	3	2	1

Right Center Balcony (RCB - 72)

1	2	3		
1	2	3	4	
1	2	3	4	
1	2	3	4	
1	2	3	4	5

Right Balcony (RB - 134)

1	2	3	4	5	6	7	8	9	10	11	12	13
1	2	3	4	5	6	7	8	9	10	11	12	13
1	2	3	4	5	6	7	8	9	10	11	12	13
1	2	3	4	5	6	7	8	9	10	11	12	13
1	2	3	4	5	6	7	8	9	10	11	12	13

Left Balcony (LB - 134)

31	30	29	28	27	26	25	24	23	22	21	20	19	18	17	16	15	14	13	12	11	10	9	8	7	6	5	4	3	2	1
----	----	----	----	----	----	----	----	----	----	----	----	----	----	----	----	----	----	----	----	----	----	---	---	---	---	---	---	---	---	---

Left Center Balcony (LCB - 82)

3	2	1		
4	3	2	1	
4	3	2	1	
4	3	2	1	
5	4	3	2	1

Center Balcony (CB 105)

15	14	13	12	11	10	9	8	7	6	5	4	3	2	1
15	14	13	12	11	10	9	8	7	6	5	4	3	2	1
15	14	13	12	11	10	9	8	7	6	5	4	3	2	1
15	14	13	12	11	10	9	8	7	6	5	4	3	2	1
15	14	13	12	11	10	9	8	7	6	5	4	3	2	1

Right Center Balcony (RCB - 72)

1	2	3		
1	2	3	4	
1	2	3	4	
1	2	3	4	
1	2	3	4	5

Right Balcony (RB - 134)

1	2	3	4	5	6	7	8	9	10	11	12	13
1	2	3	4	5	6	7	8	9	10	11	12	13
1	2	3	4	5	6	7	8	9	10	11	12	13
1	2	3	4	5	6	7	8	9	10	11	12	13
1	2	3	4	5	6	7	8	9	10	11	12	13

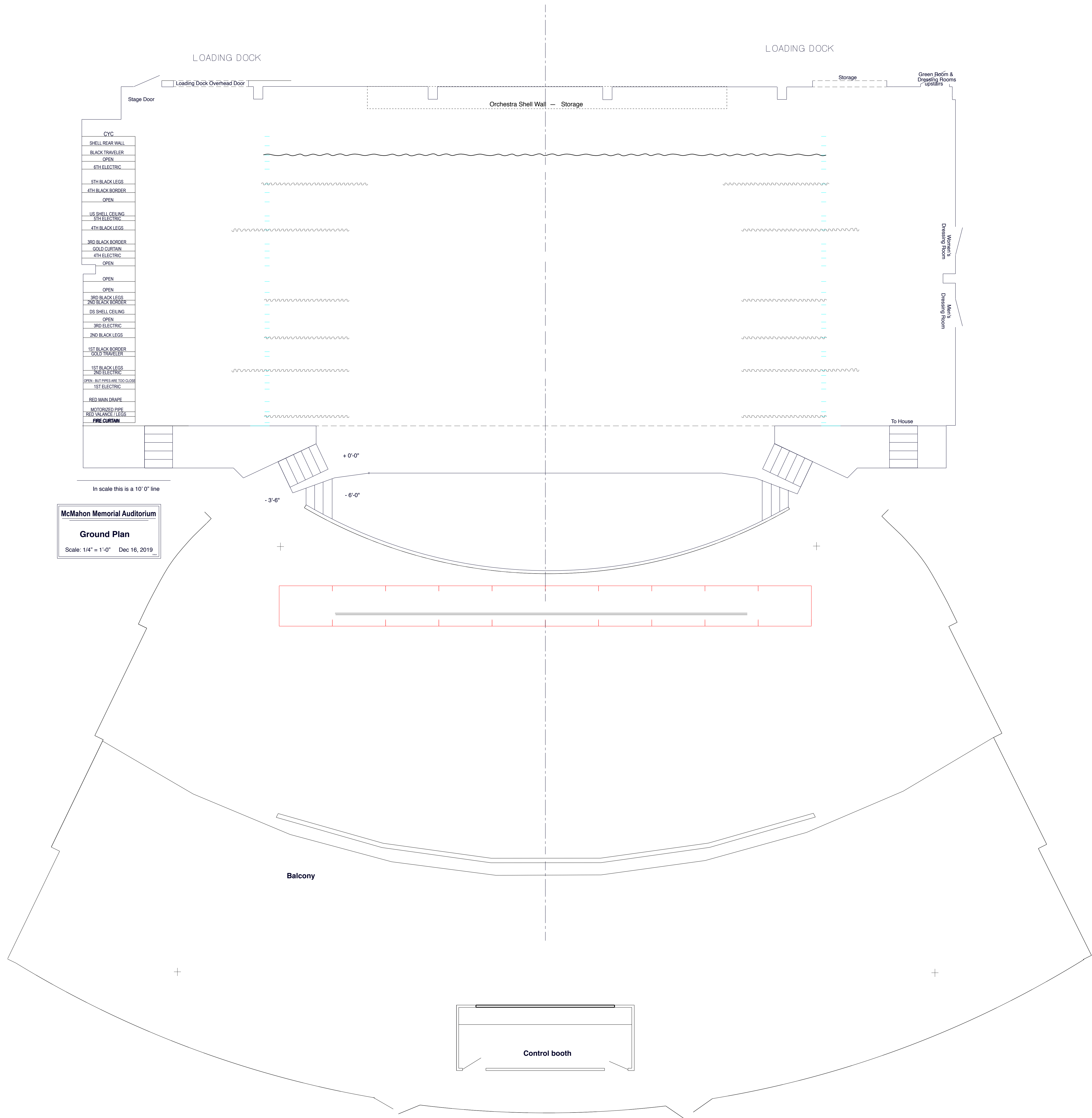
STAIRS

STAIRS

Spotlight Booth



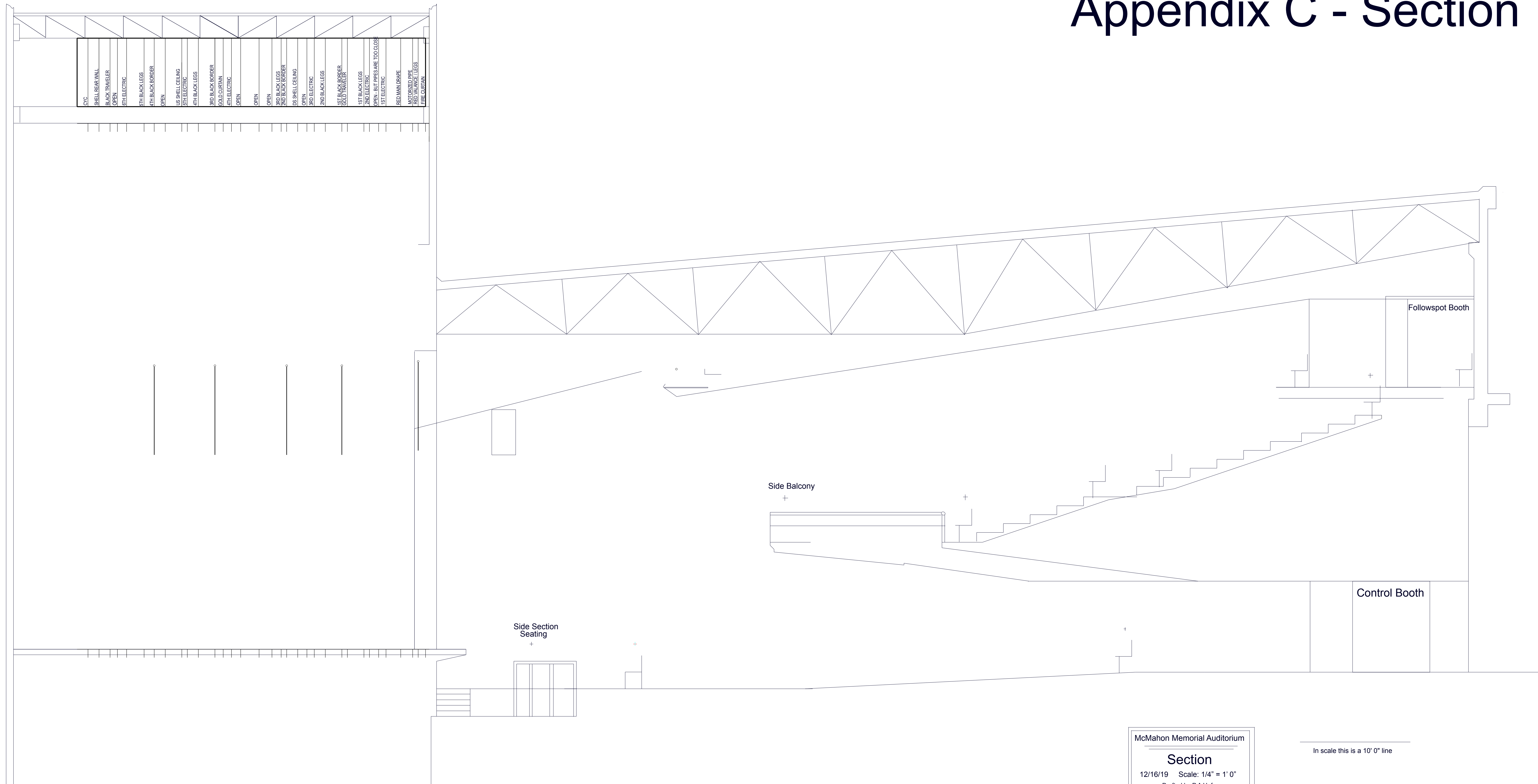
# Appendix B - Ground Plan



In scale this is a 10' 0" line

**McMahon Memorial Auditorium**  
**Ground Plan**  
Scale: 1/4" = 1'-0" Dec 16, 2019

# Appendix C - Section



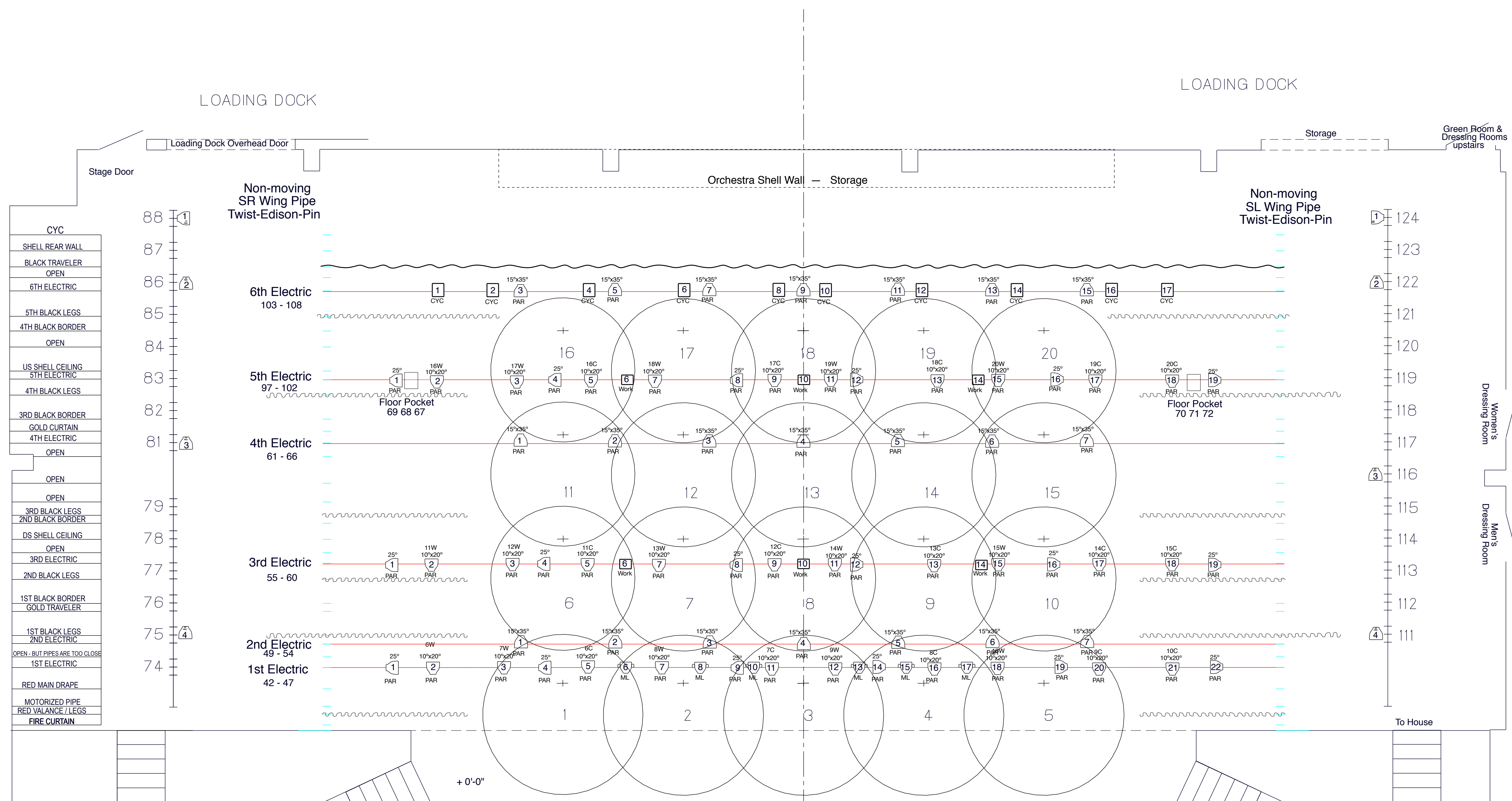
McMahon Memorial Auditorium  
Section  
12/16/19 Scale: 1/4" = 1' 0"  
Drafted by P A Hofmann

In scale this is a 10' 0" line

## Appendix D Lineset Schedule

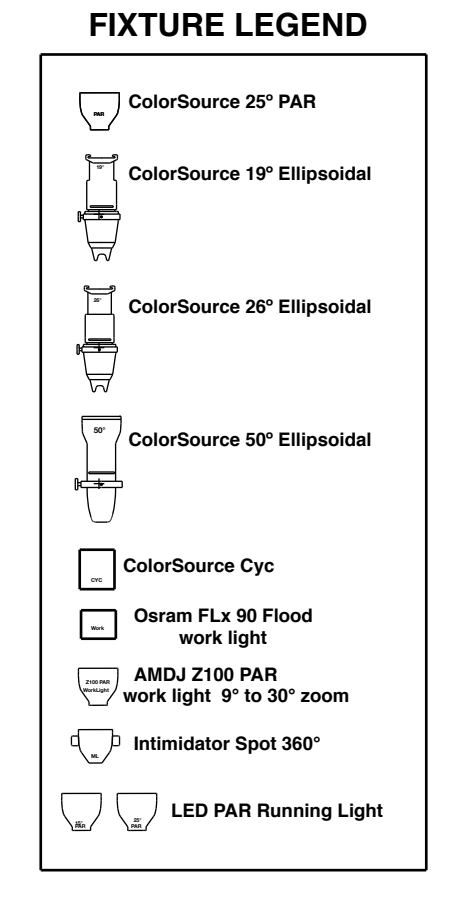
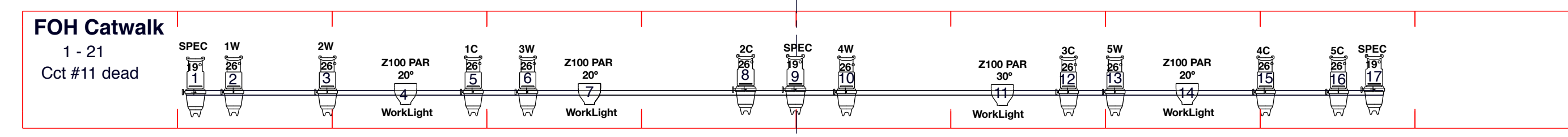
<u>Lineset #</u>	<u>Dist. From PL</u>	<u>Purpose</u>	<u>H x W approx.</u>
<b>NOTE: all measurements taken at Lock Rail.</b>			
---	4"	Fire Curtain	24'x50'
---	1'-0"	Red Valence & Legs	Legs @ 21' off CL
---	1'-6"	Motorized Pipe	
1	2'-7"	Red Main Drape	21'-0"x59'-0"
2	3'-11"	1st Electric	
3	4'-5"	OPEN (not usable, cannot fit between adjacent pipes)	
4	5'-5"	2nd Electric	Orch. Shell Downlights
5	5'-11"	1st Black Legs	22'-6"x12'-0" each; 21' off CL
6	7'-5"	Gold Traveler	21'-0"x59'-0"
7	7'-11"	1st Black Border	8'-0"x60'-0"
8	9'-5"	2nd Black Legs	22'-6"x12'-0" each; 21' off CL
9	10'-5"	3rd Electric	
10	11'-1"	OPEN	
11	11'-11"	DS Orchestra Shell Ceiling	
12	12'-11"	2nd Black Border	8'-0"x60'-0"
13	13'-5"	3rd Black Legs	22'-6"x12'-0" each; 21' off CL
14	14'-3"	OPEN	
15	15'-5"	OPEN	
16	17'-1"	OPEN	
17	17'-11"	4th Electric	Orch. Shell Downlights
18	18'-8"	Gold Curtain	21'-0"x59'-0"
19	19'-5"	3rd Black Border	8'-0"x60'-0"
20	20'-11"	4th Black Legs	22'-6"x12'-0" each; 21' off CL
21	21'-11"	5th Electric	
22	22'-5"	US Orchestra Shell Ceiling	
23	23'-11"	OPEN	
24	24'-11"	4th Black Border	7'-0"x60'-0"
25	25'-10"	5th Black Legs	22'-6"x12'-0" each; 19' off CL
26	27'-5"	6th Electric	Orch. Shell Downlights
27	28'-3"	OPEN	
28	28'-11"	Black US Traveler	21'-0"x55'-0"
29	29'-11"	Orchestra Shell Rear Wall	
30	30'-11"	White Cyc	22'-0"x49'-6"

# Appendix E - Light Plot



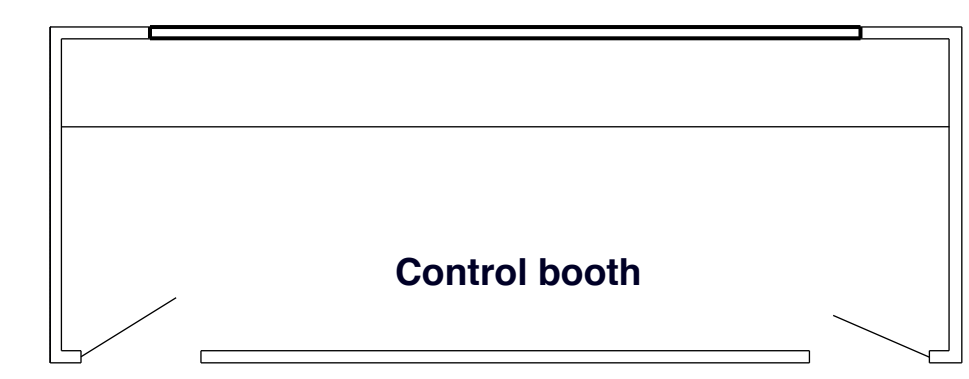
In scale this is a 10' 0" line

**McMahon Memorial Auditorium**  
**Standard Light Plot**  
 Scale: 1/4" = 1'-0" Dec 16, 2019

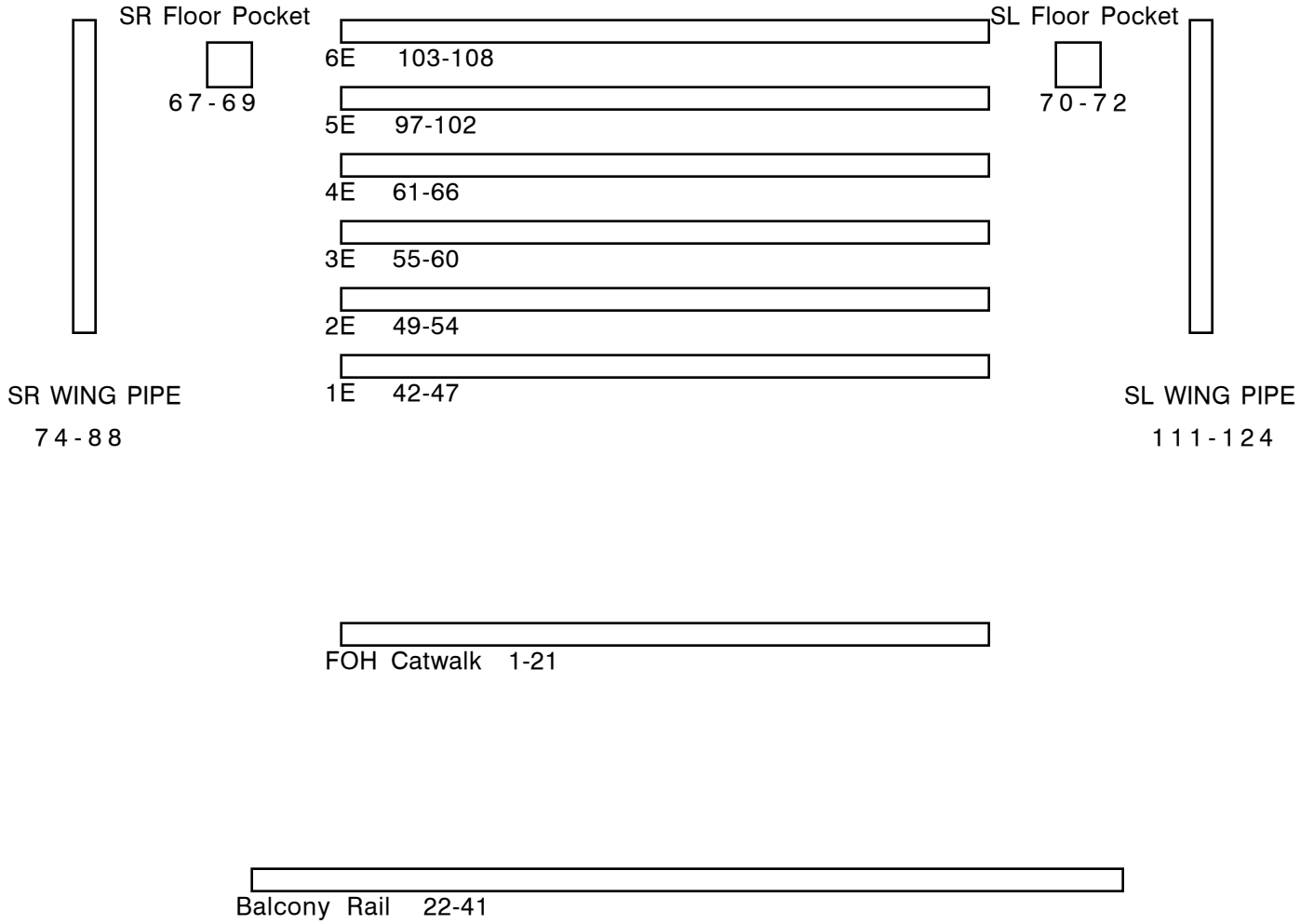


Balcony rail  
 "Twist-Edison-Pin"  
 22 - 41

Balcony



Control booth



# Appendix G Audio In/Out

