

PROVIDING OPPORTUNITIES TO ENGAGE IN LIFE-LONG LEARNING

LIBRARY CARD

A card issued by the Lawton Public Library is required to borrow materials. In addition, a library card allows access to the computer lab, electronic library, databases, and more.

In order to obtain a library card, an applicant is required to verify:

- Proof of identity with a valid government-issued photo ID &
 - Proof of residency.
- A valid driver's license will suffice for both proof of identity and residency.

Acceptable items to prove residence include current (within the last 30 days):

- Utility bill
- Lease agreement
- Bank statement
- Paystub
- Letter

MAIN LIBRARY

110 SW 4th Street
Lawton, OK 73501
580.581.3450

Monday	9 am - 8 pm
Tuesday	9 am - 8 pm
Wednesday	9 am - 8 pm
Thursday	9 am - 6 pm
Friday	9 am - 6 pm
Saturday	9 am - 6 pm
Closed Sundays	



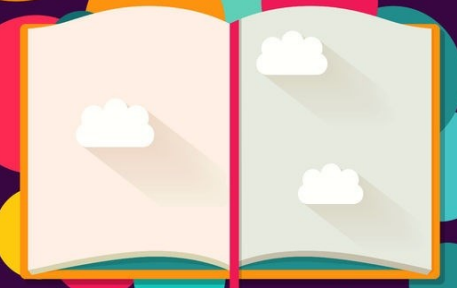
BRANCH LIBRARY

1304 NW Kingswood Road
Lawton, OK 73505
580.581.3457

Tuesday	12 noon - 5 pm
Thursday	12 noon - 5 pm
Saturday	10 am - 3 pm



WELCOME to the LIBRARY



Lawton Public Library

Main Library: (580) 581-3450
Branch Library: (580) 581-3457

lawtonok.gov/departments/library



[facebook.com/lawtonpubliclib](https://www.facebook.com/lawtonpubliclib)



[@lawtonpubliclib](https://twitter.com/lawtonpubliclib)

Did You Know?

The book drop is open 24/7 at both library locations. Items can also be returned at either location.

COMPUTER LAB

Public computers are available at both the Main Library and the Branch Library. Individuals without a library card can obtain a computer use card to have access to the library's computers and internet.

Print & Copy Pricing

Black & white - \$0.10/page.

Color - \$0.50/page.

WIFI

Wifi is available at both library locations. No card or password required.

COMPUTER ASSISTANCE

Individuals can receive computer and internet training/assistance by contacting the Reference Desk for an appointment. (580) 581-3450 ext. 3

Did You Know?

Our libraries have 28 computers available for public use. Each computer has internet access and Microsoft Office 2019.

CHECKING OUT

The limit for the first-time check out on a non-restrictive library card is 5 items. After the first items checked out are returned, the limit is increased to 40. Out of those 40, a maximum of 10 DVDs can be checked out.

CHECKOUT LIMITS

DVD's	1 week
Magazines	1 week
LaunchPads	1 week
Library of Things	2 weeks
Most Books	3 weeks
CD's	3 weeks

E-LIBRARY

Along with checkouts in the library, library card holders have access to a large variety of e-books, e-audiobooks, e-magazines, music, TV shows, movies, & more. These are available online at:

hoopladigital.com

okvirtuallibrary.overdrive.com

or by downloading the apps like

Libby by Overdrive or **Hoopla**.

The username for logging in is the 14 digit library card number.

Password/Pin is your last name in all caps.

Available on:



DATABASES

Databases are available at both library locations, or from any device that can connect to the internet. These are your portals to research & information.

Databases include:

- Access World News
- Ancestry (in-library only)
- Consumer Health Complete
- Driving Tests
- EBSCO host
- Explora
- Fold3
- Hobbies & Crafts Reference
- Home Improvement Reference
- Legal Information Reference
- March2Success
- MedlinePlus
- Mometrix
- Small Business Reference
- Transparent Language Online
- Inter-Library Loan

(Interlibrary loan is \$2.00 per item)

Did You Know?

Every month the library releases a newsletter with all of the library sponsored classes, events, and activities. You can pick up a newsletter at either library location or view it online at: lawtonok.gov/departments/library